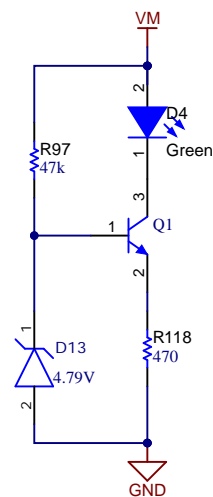
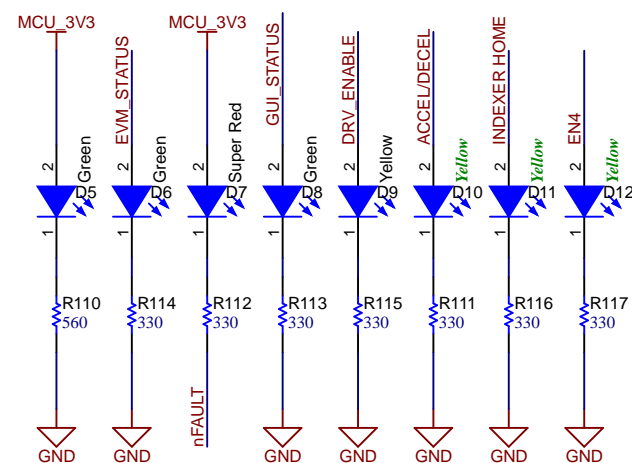
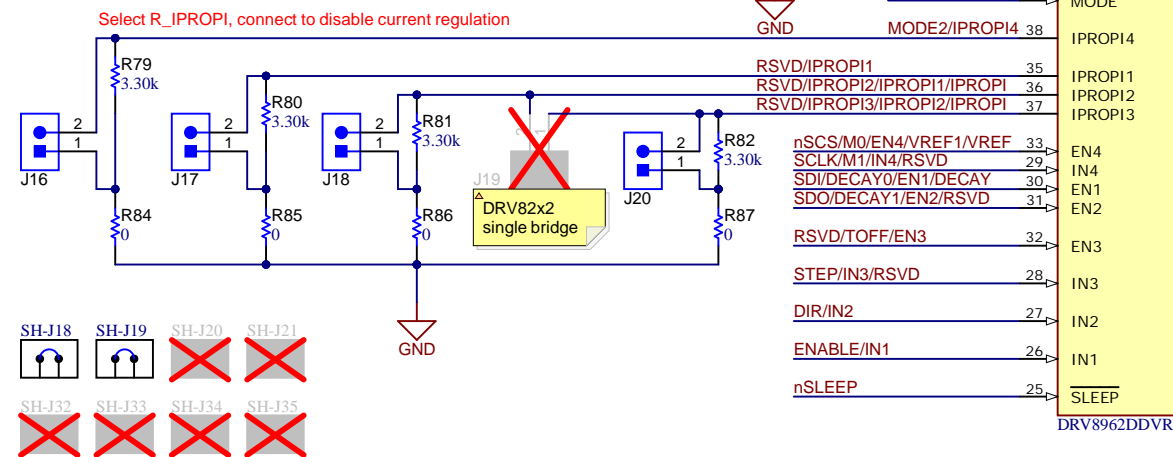
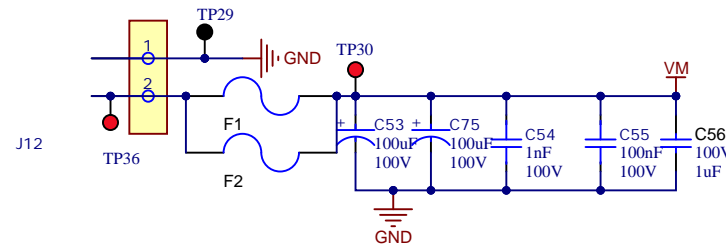


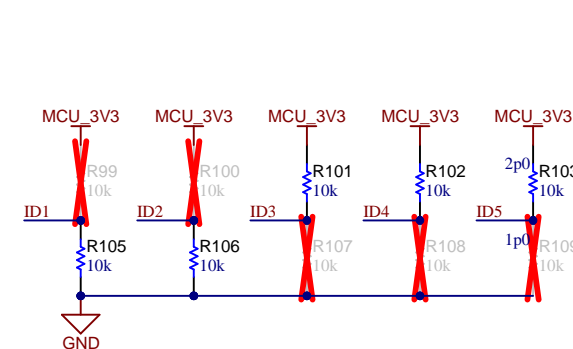
Motor Driver

4.5 - 48V DC (DRV8452; DRV8252, DRV8952)

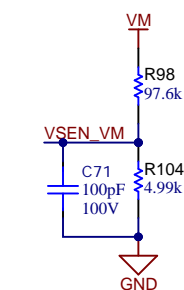
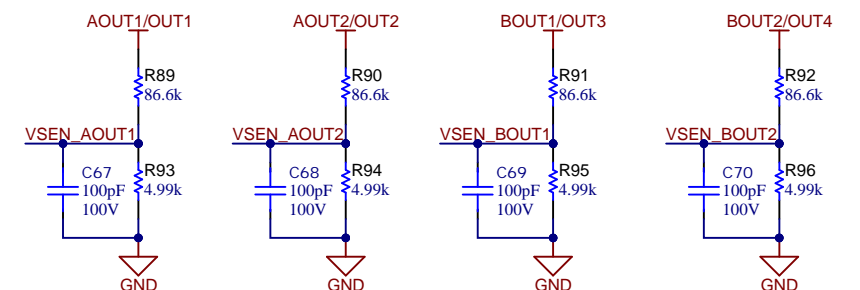
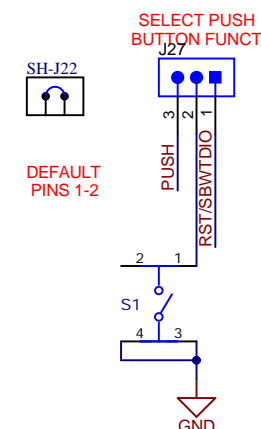
4.5 - 60V DC (DRV8462; DRV8262, DRV8962)



ID

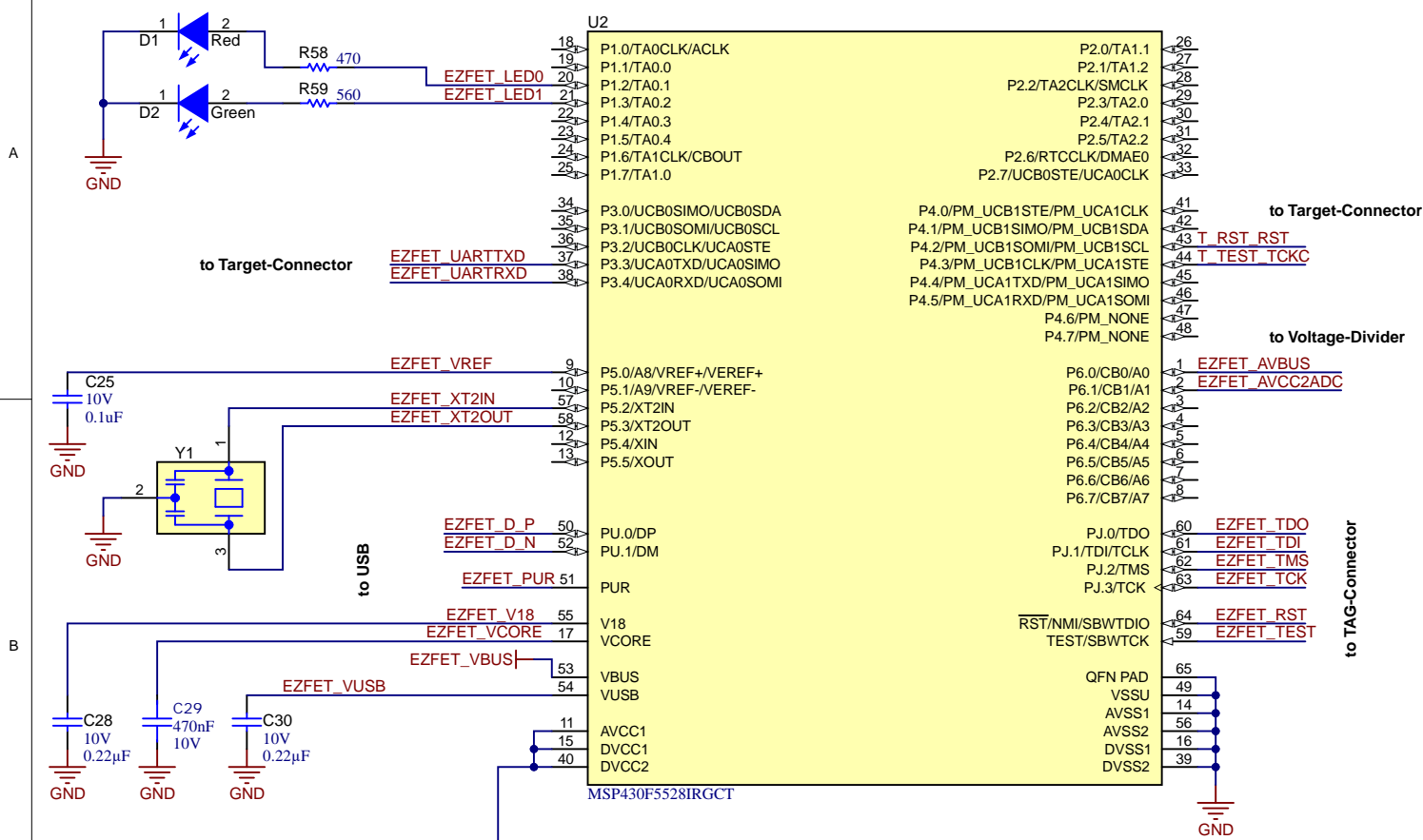


BUTTON

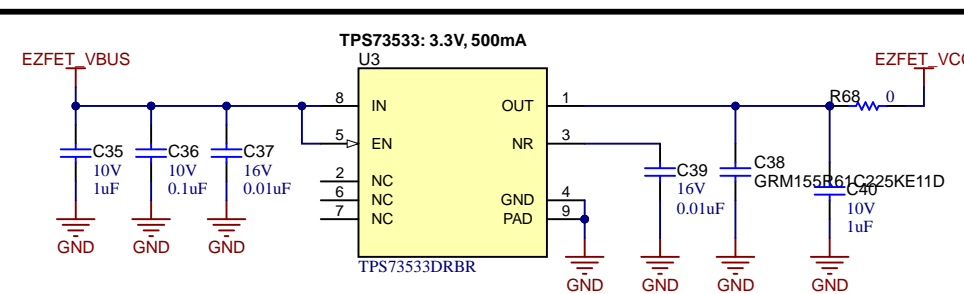


Orderable: DRV8962VEVM	Designed for: Public Release	Mod. Date: 6/20/2023	
TID #: N/A	Project Title: DRV8x62VEVM		
Number: MD041	Rev: A	Sheet Title:	
SVN Rev: Not in version control	Assembly Variant: 002	Sheet: 1 of 4	
Drawn By:	File: MD041_Motor_Driver_RevA.SchDoc	Size: B	
Engineer: Akshay Rajeev Menon			http://www.ti.com © Texas Instruments 2022

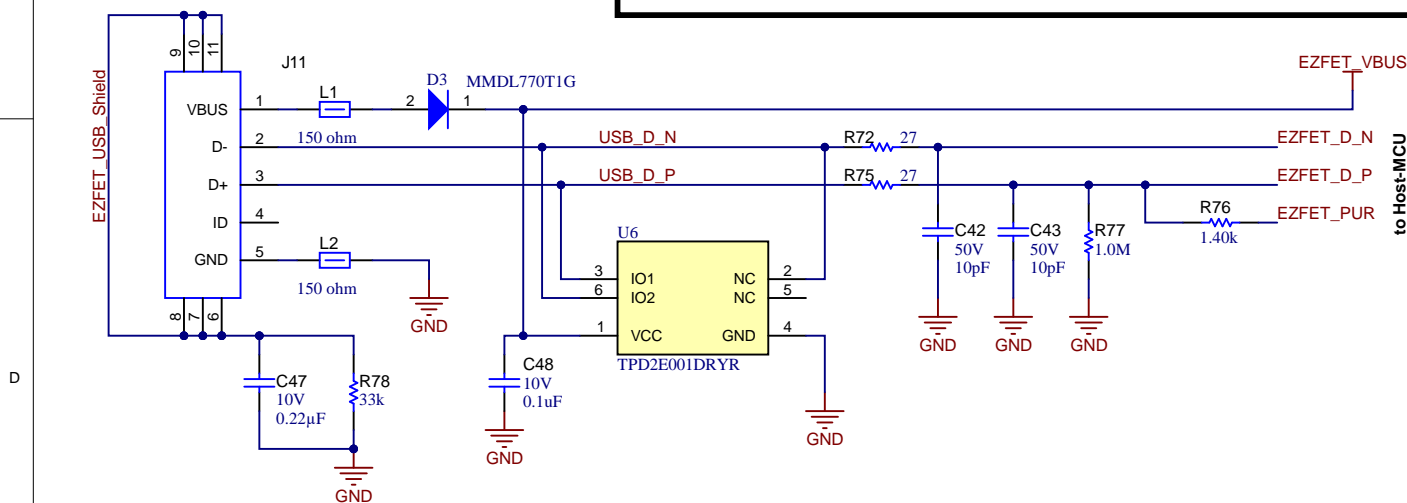
Host MCU for Emulation



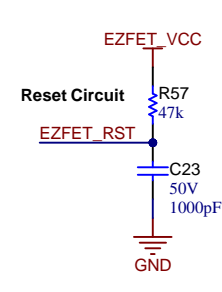
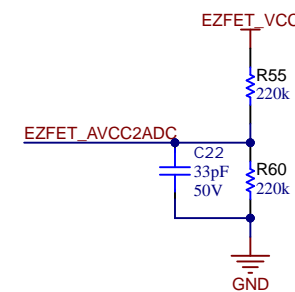
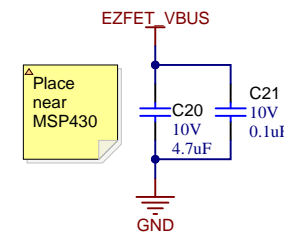
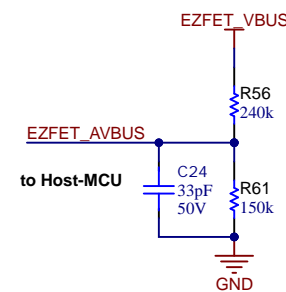
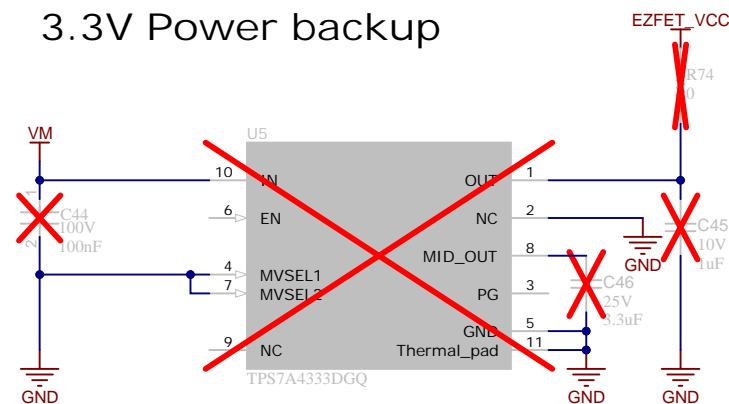
3.3V Power (EZFET_VCC)



USB-Interface



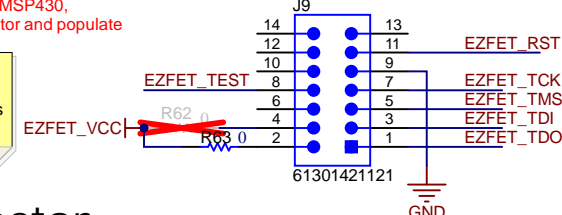
3.3V Power backup



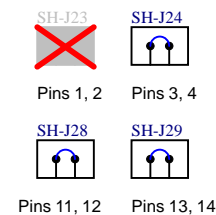
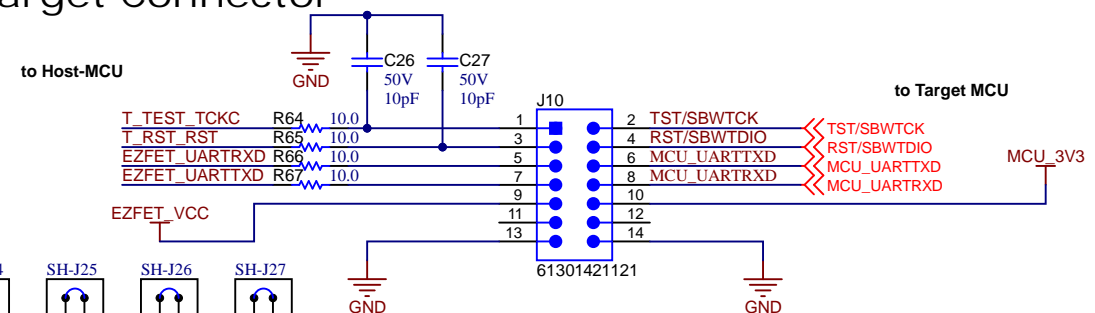
TAG-Connector (Host Debug)

DNPed Pin 2 zero resistor. If debug or programming adapter is used to power the MSP430, remove Pin 4 resistor and populate Pin 2 resistor.

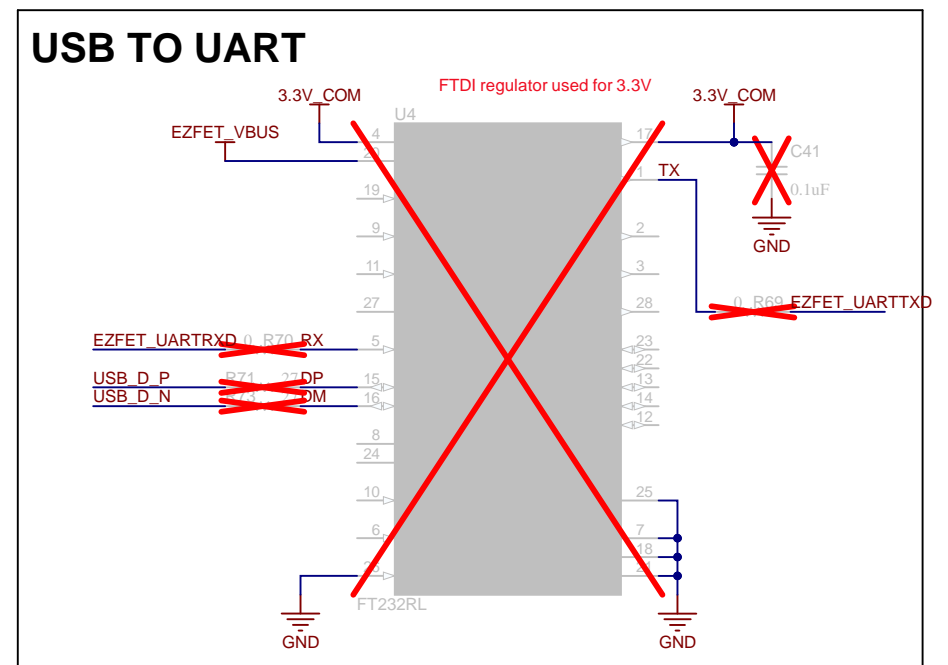
Host-MCU Debug Connector



Target Connector



USB TO UART



MSP430F5338

C2000 (LAUNCHXL-F280025C) connectors

